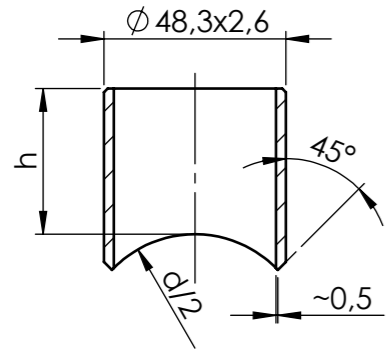
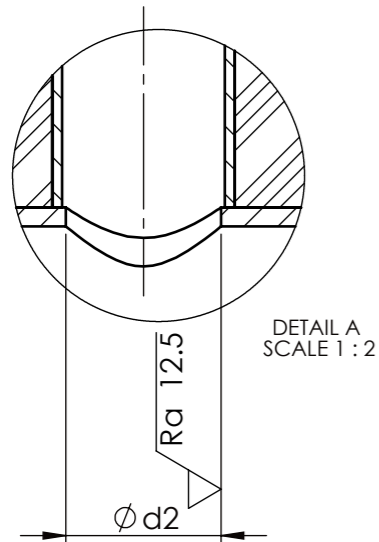


Material demand for Branching tube:
 $\phi 48,3 \times 2,6$ EN 10217-2 - P235GH



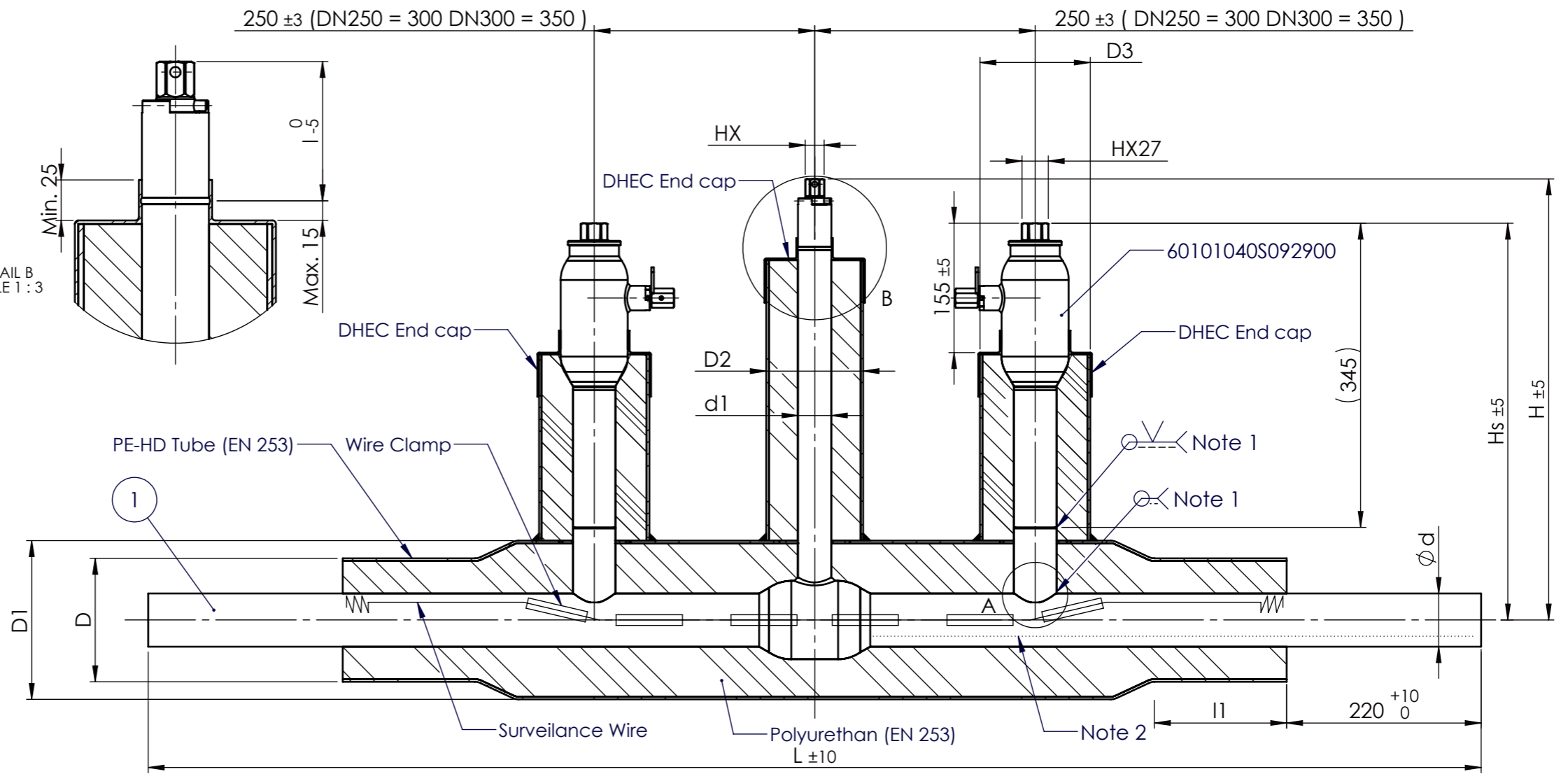
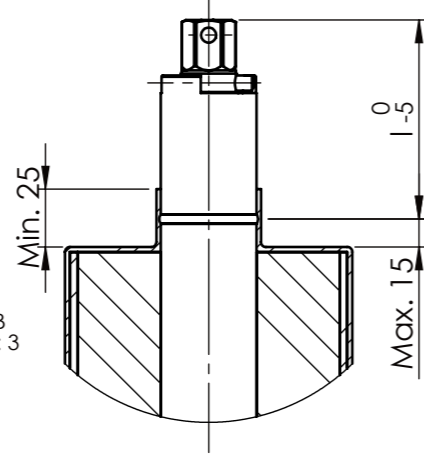
Note 1:
Butt weld, full penetration.

Spatter from welding is not accepted inside the main pipe.



DETAIL A
SCALE 1 : 2

DETAIL B
SCALE 1 : 3



Note 2:
Positioning, eventual Seam of Weld end tube (indicated), must be placed in the opposite direction, of Branching.

Inspection of weld between branch and service pipe:
 Acceptance criteria for visual inspection: ISO 5817 - level B
 Tightness test: 6 bar (g) min. 15 minutes - The weld shall be coated with leak detection fluid and check shall be made for continuous formation of bubbles.

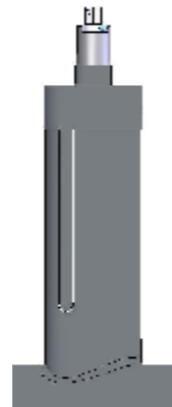
Marking PE-HD tube:
 Code or tradname for PE-HD tube, MFR (Melt Flow Rate). Diameter and thickness for PE-HD tube, time for manufacturing year and week. (eg. code) Identification of manufacturer.

PE-HD tube must be marked with BROEN A/S label for Valve, and BALLOMAX label No.491117.

Protection main Valve:
 Protection cap for Weld end, Yellow cap.

DN	Catalogue no. Nordic Alarm	Catalogue no. Nordic Alarm/ Nordic Alarm outlet	d	L	H	Hs	h	HX	D	D1	D2	D3	d1	d2	l	l1	POS.1	Label no. Valve
040	67102040 0092	67102040A0092	48,3	1510	495	444	75	19	125	160	110	125	38	37	80	150	67102040S697000	600412 - DN040 PN25
050	67102050 0092	67102050A0092	60,3	1510	500	450	75	19	140	180	110	125	38	41	80	150	67102050S697100	600413 - DN050 PN25
065	67102065 0092	67102065A0092	76,1	1510	505	468	85	19	160	200	110	125	38	41	80	150	67102065S697200	600414 - DN065 PN25
080	67102080 0092	67102080A0092	88,9	1510	515	475	85	19	180	225	110	125	38	41	80	150	67102080S604000	600415 - DN080 PN25
100	67102100 0092	67102100A0092	114,3	1510	525	507	105	27	225	280	125	125	57	41	95	150	67102100S604100	600416 - DN100 PN25
125	67102125 0092	67102125A0092	139,7	1510	545	520	105	27	250	315	125	125	76	41	105	150	67102125S604200	600417 - DN125 PN25
150	67102150 0092	67102150A0092	168,3	1510	565	534	105	27	280	355	125	125	76	41	105	150	67102150S604300	600418 - DN150 PN25
200	67102200 0792	67102200A0792	219,1	1510	585	575	120	50/90	355	450	125	125	76	41	130	150	67102200S604400	600419 - DN200 PN25
250	47102250 0792	47102250A0792	273,0	1510	613	607	125	50/90	450	560	160	125	108	41	140	150	47102250S323600	600420 - DN250 PN25
300	47102300 0792	47102300A0792	323,9	1810	664	642	135	50/90	500	630	160	125	108	41	140	150	47102300S323800	600421 - DN300 PN25

Note: DN250 has got a different casing design



Valves with Alarm outlet, stated with an A in the Catalogue no.
 2 pcs. placed diagonally (180°) along the Stem guide and outside the end cap.

Illustrated here to the left.
 Specification according to INT-026.

000513	05	Change of the valve pos.1	16-02-2018	DTO
QDA	DCN	REV.	CHANGE	DATE

BROEN VALVE TECHNOLOGIES	MATERIAL	WEIGHT (g)	23263.38	SCALE
	PART	BALLOMAX DN050 WW EXT HS	DATE 21-12-2009	1:6
UNSPECIFIED TOLERANCES ANGLES ± 2° OTHER DIM. ± 0,2	PRODUCT	PREINSULATION SUPER	APPR. JJA	DATE 27-02-2018
	CONNECTIONS	2 SERVICE VALVE	DRAWING NUMBER 176200	
This drawing is our property and may not be transferred to third party, copied or made use of without our permission.			SP no.:	Sheet 1 of 2